

**M**  
**SIGMA**<sup>®</sup>  
EST. 1970



## THE LEGEND IS ALIVE - SIGMA GUITARS ARE BACK ...

In the late 1960s the situation for US guitar manufacturers became difficult: guitars that were made in Japan, looking very similar to US guitars, were flooding the market but at a much lower price. These guitars increasingly endangered the US manufacturers dominance on the market, and a few American companies reacted to that development in an appropriate manner: They did not take any legal steps but instead launched a counter offensive. That's when "Sigma Guitars" was born. In 1970 "SIGMA", the brandname for acoustic guitars, was launched. They were built by specially trained staff in the most efficient guitar factories in Japan and then sent to the US for inspection before being released for sale and shipping to the music stores.

The first Japanese made Sigma guitars were quite different to the instruments built in the following years in other countries. After several years of production the manufacturing of the guitars was moved to Korea, with new model numbers in place, and the development of a new logo. From now on every single guitar featured on the headstock the following words with pride: "Sigma Guitars Est. 1970".

"Sigma Guitars" were soon to have an excellent, yes even legendary, reputation. Some models were said to be of outstanding quality, both, in construction and sound. That's why it is striking, but not surprising, that there are hardly any second-hand Sigma guitars up for sale. Most owners still swear by their instruments and would never part with them. There are Sigma fans, Sigma communities, Sigma websites; and even collectors have specialised in Sigma guitars. We at AMI feel committed and obliged to this tradition. As a distributor of fine acoustic and classical guitars for over 25 years, it is a great honour that we were able to obtain for some parts of the world the rights of the time-honoured name "Sigma Guitars Est. 1970" as well as the distinct Sigma logo.

Our business partner and guitar manufacturer is one of the most respected makers who has been building outstanding quality guitars for over 20 years. This is where the circle closes: "**Sigma Guitars Est. 1970**", has returned, and we, at AMI are proud to be part of this legend.



# Travel Guitars

## TM-15E+

Body Size	Travel Guitar	Scale Length	23" (584 mm)
Construction	Dovetail Neck Joint	Neck width at nut	1-11/16" (42,9 mm)
Top	Solid Mahogany	Tuning Machines	Chrome, mini diecast
Back & Sides	Mahogany	Electronics	Fishman Presys I (with Tuner)
Neck	Mahogany, Low Profile	Finish	Ultra-thin UV-finish
Nut & Saddle	Bone	Bag	Bag for Travel Guitars included
Fingerboard	Micarta		



Photo: TM-15+, TM-12E+, TM-12+

# SE Series



## 00MSE+

Body Size	00-12 Fret
Construction	Dovetail Neck Joint
Top	Solid Sitka Spruce
Back & Sides	Mahogany
Neck	Mahogany, Low Profile
Nut & Saddle	Bone
Fingerboard	Micarta
Scale Length	25.4" (645 mm)
Neck width at nut	1-11/16" (42,9 mm)
Tuning Machines	Chrome, diecast
Electronics	Sigma Preamp (with Tuner)
Finish	Ultra-thin UV-finish



## DME+ / DM12E+

Body Size	D-14 Fret	Scale Length	25.4" (645 mm)
Construction	Dovetail Neck Joint	Neck width at nut	DME+: 1-11/16" (42,9 mm) DM12E+: 1-7/8" (47,6 mm)
Top	Solid Sitka Spruce	Tuning Machines	DME+: Chrome, diecast DM12E+: Chrome, mini diecast
Back & Sides	Mahogany	Electronics	Sigma Preamp (with Tuner)
Neck	Mahogany, Low Profile	Finish	Ultra-thin UV-finish
Nut & Saddle	Bone		
Fingerboard	Micarta		

Also available: 000ME+, DMEL+ (lefthand), GME+

# SE Series

## GTCE+ / 000TCE+ / DTCE+

Body Size	GTCE+: Grand OM-14 Fret, Cutaway 000TCE+: 000-14 Fret, Cutaway DTCE+: D-14 Fret, Cutaway
Construction	Dovetail Neck Joint
Top	Solid Sitka Spruce
Back & Sides	Tilia
Neck	Mahogany, Low Profile
Nut & Saddle	Bone
Fingerboard	Micarta
Scale Length	25.4" (645 mm)
Neck width at nut	GTCE+: 1-3/4" (44,5 mm) 000TCE+, DTCE+: 1-11/16" (42,9 mm)
Tuning Machines	Chrome, diecast
Electronics	Sigma Preamp (with Tuner)
Finish	Ultra-thin UV-finish



# SE Series

## DMCE-BKB+

Body Size	D-14 Fret, Cutaway
Construction	Dovetail Neck Joint
Top	Solid Sitka Spruce
Back & Sides	Mahogany
Neck	Mahogany, Low Profile
Nut & Saddle	Bone
Fingerboard	Micarta
Scale Length	25.4" (645 mm)
Neck width at nut	1-11/16" (42,9 mm)
Tuning Machines	Chrome, diecast
Electronics	Sigma Preamp (with Tuner)
Finish	Ultra-thin UV-finish



# ST Series



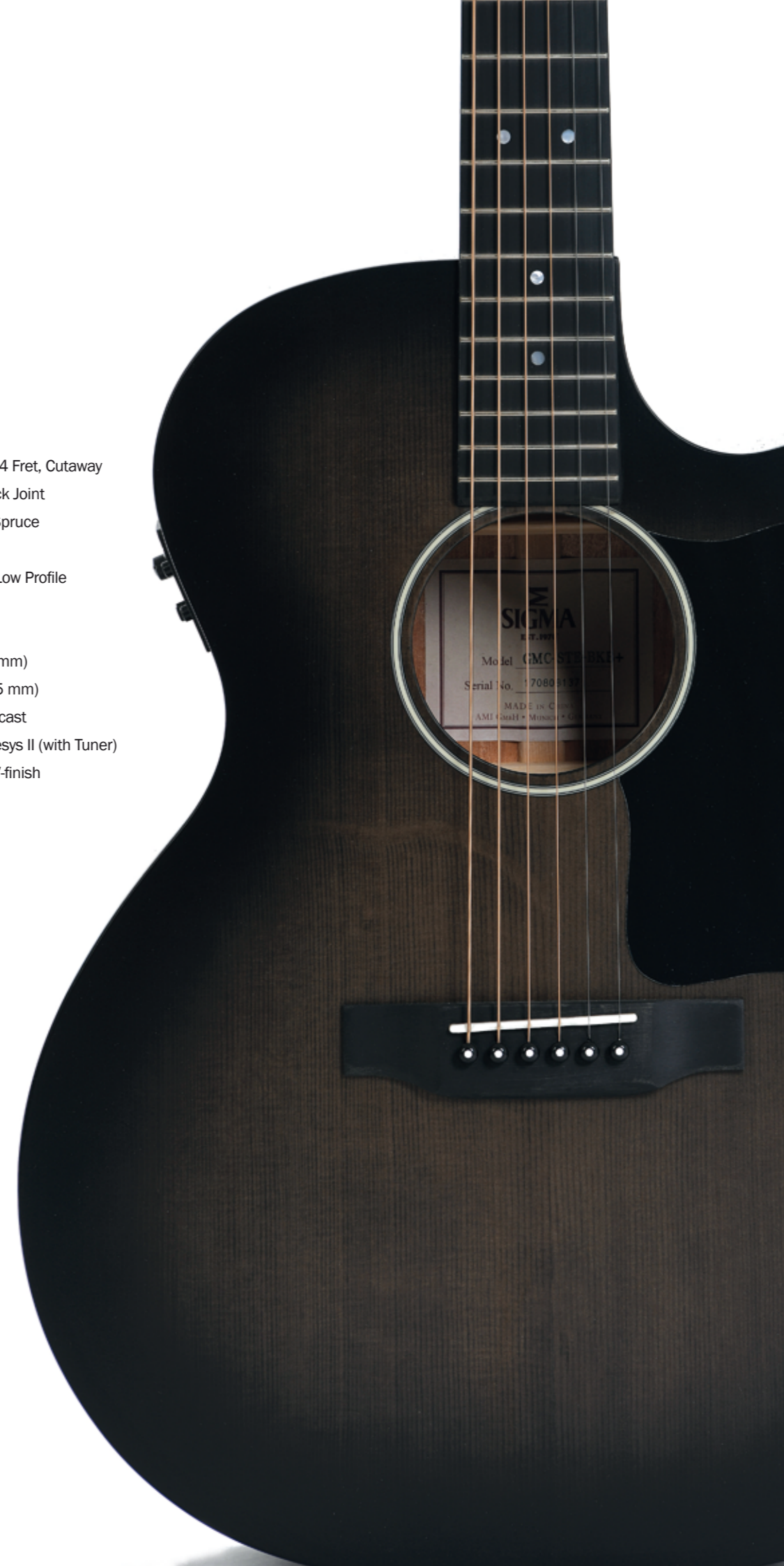
## GMC-STE+ / DMC-STE+

Body Size	GMC-STE+: Grand OM-14 Fret, Cutaway DMC-STE+: D-14 Fret, Cutaway	Fingerboard	Micarta
Construction	Dovetail Neck Joint	Scale Length	25.4" (645 mm)
Top	Solid Sitka Spruce	Neck width at nut	GMC-STE+: 1-3/4" (44,5 mm) DMC-STE+: 1-11/16" (42,9 mm)
Back & Sides	Mahogany	Tuning Machines	Chrome, diecast
Neck	Mahogany, Low Profile	Electronics	Fishman Presys II (with Tuner)
Nut & Saddle	Bone	Finish	Ultra-thin UV-finish

Also available: DM-ST+, OMM-STL+ (lefthand)

## GMC-STE-BKB+

Body Size	Grand OM-14 Fret, Cutaway
Construction	Dovetail Neck Joint
Top	Solid Sitka Spruce
Back & Sides	Mahogany
Neck	Mahogany, Low Profile
Nut & Saddle	Bone
Fingerboard	Micarta
Scale Length	25.4" (645 mm)
Neck width at nut	1-3/4" (44,5 mm)
Tuning Machines	Chrome, diecast
Electronics	Fishman Presys II (with Tuner)
Finish	Ultra-thin UV-finish





## OMM-ST+

Body Size	000-14 Fret
Construction	Dovetail Neck Joint
Top	Solid Sitka Spruce
Back & Sides	Mahogany
Neck	Mahogany, Low Profile
Nut & Saddle	Bone
Fingerboard	Micarta
Scale Length	25.4" (645 mm)
Neck width at nut	1-3/4" (44,5 mm)
Tuning Machines	Chrome, diecast
Finish	Ultra-thin UV-finish

## SDM-STE+

Body Size	D-14 Fret
Construction	Dovetail Neck Joint
Top	Solid Sitka Spruce
Back & Sides	Solid Mahogany
Neck	Mahogany, Low Profile
Nut & Saddle	Bone
Fingerboard	Micarta
Scale Length	25.4" (645 mm)
Neck width at nut	1-11/16" (42,9 mm)
Tuning Machines	Chrome, diecast
Electronics	Sigma Soundhole Pickup
Finish	Ultra-thin UV-finish
Bag	SBX-D bag included





# 1 Series



## 00M-1STS-SB+

Body Size	00-12 Fret
Construction	Dovetail Neck Joint
Top	Solid Sitka Spruce
Back & Sides	Mahogany
Neck	Mahogany, Low Profile
Nut & Saddle	Bone
Fingerboard	Micarta
Scale Length	25.4" (645 mm)
Neck width at nut	1-11/16" (42,9 mm)
Tuning Machines	Chrome, diecast
Finish	Ultra-thin UV-finish



## DM-1ST+

Body Size	D-14 Fret
Construction	Dovetail Neck Joint
Top	Solid Sitka Spruce
Back & Sides	Mahogany
Neck	Mahogany, Low Profile
Nut & Saddle	Bone
Fingerboard	Micarta
Scale Length	25.4" (645 mm)
Neck width at nut	1-11/16" (42,9 mm)
Tuning Machines	Chrome, diecast
Finish	Ultra-thin UV-finish



Also available: DM-1STL+

# 1 Series



## DMC-1STE-BK+ 000MC-1STE-BK+

Body Size	DMC-1STE-BK+: D-14 Fret, Cutaway 000MC-1STE-BK+: 000-14 Fret, Cutaway
Construction	Dovetail Neck Joint
Top	Solid Sitka Spruce
Back & Sides	Mahogany
Neck	Mahogany, Low Profile
Nut & Saddle	Bone
Fingerboard	Micarta

Scale Length	25.4" (645 mm)
Neck width at nut	1-11/16" (42,9 mm)
Tuning Machines	Chrome, diecast
Electronics	Fishman Presys II (with Tuner)
Finish	Ultra-thin UV-finish



## JMC-1STE+ JM12-1STE+

Body Size	JMC-1STE+: J-14 Fret, Cutaway JM12-1STE+: J-14 Fret
Construction	Dovetail Neck Joint
Top	Solid Sitka Spruce
Back & Sides	Mahogany
Neck	Mahogany, Low Profile
Nut & Saddle	Bone
Fingerboard	Micarta
Scale Length	25.4" (645 mm)

Neck width at nut	JMC-1STE+: 1-11/16" (42,9 mm) JM12-1STE+: 1-7/8" (47,6 mm)
Tuning Machines	JMC-1STE+: Chrome, diecast JM12-1STE+: Chrome, Mini diecast
Electronics	Fishman Presys II (with Tuner)
Finish	Ultra-thin UV-finish



Also available: 000MC-1STE+, DMC-1STE+, DMC-1STEL+ (left-hand)

# I Series

## GMC-1STE+

Body Size	Grand OM-14 Fret, Cutaway	Fingerboard	Micarta
Construction	Dovetail Neck Joint	Scale Length	25.4" (645 mm)
Top	Solid Sitka Spruce	Neck width at nut	1-3/4" (44,5 mm)
Back & Sides	Mahogany	Tuning Machines	Chrome, diecast
Neck	Mahogany, Low Profile	Electronics	Fishman Presys II (with Tuner)
Nut & Saddle	Bone	Finish	Ultra-thin UV-finish



# 1 Series



## OMTC-1STE-SB+

Body Size	000-14 Fret, Cutaway
Construction	Dovetail Neck Joint
Top	Solid Sitka Spruce
Back & Sides	Tilia
Neck	Mahogany, Low Profile
Nut & Saddle	Bone
Fingerboard	Micarta
Scale Length	25.4" (645 mm)
Neck width at nut	1-3/4" (44,5 mm)
Tuning Machines	Chrome, diecast
Electronics	Fishman Presys II (with Tuner)
Finish	Ultra-thin UV-finish



## DT-1STE+ / OMT-1STE+

Body Size	DT-1STE+: D-14 Fret OMT-1STE+: 000-14 Fret	Fingerboard	Micarta
Construction	Dovetail Neck Joint	Scale Length	25.4" (645 mm)
Top	Solid Sitka Spruce	Neck width at nut	DT-1STE+: 1-11/16" (42,9 mm) OMT-1STE+: 1-3/4" (44,5 mm)
Back & Sides	Tilia	Tuning Machines	Chrome, diecast
Neck	Mahogany, Low Profile	Electronics	Sigma Soundhole Preamp
Nut & Saddle	Bone	Finish	Ultra-thin UV-finish

Also available: DTC-1STE-SB+

# 15 Series



## 000M-15+

Body Size	000-14 Fret
Construction	Dovetail Neck Joint
Top	Solid Mahogany
Back & Sides	Mahogany
Neck	Mahogany, Low Profile
Nut & Saddle	Bone
Fingerboard	Micarta
Scale Length	25.4" (645 mm)
Neck width at nut	1-11/16" (42,9 mm)
Tuning Machines	Chrome, Grover diecast
Finish	Ultra-thin UV-finish



## 00M-15S+

Body Size	00-12 Fret	Fingerboard	Micarta
Construction	Dovetail Neck Joint	Scale Length	25.4" (645 mm)
Top	Solid Mahogany	Neck width at nut	1-3/4" (44,5 mm)
Back & Sides	Mahogany	Tuning Machines	Nickel, Grover Open-Geared
Neck	Mahogany, Low Profile	Finish	Ultra-thin UV-finish
Nut & Saddle	Bone		

## 000MC-15E+

Body Size	000-14 Fret, Cutaway	Fingerboard	Micarta
Construction	Dovetail Neck Joint	Scale Length	25.4" (645 mm)
Top	Solid Mahogany	Neck width at nut	1-11/16" (42,9 mm)
Back & Sides	Mahogany	Tuning Machines	Chrome, Grover diecast
Neck	Mahogany, Low Profile	Electronics	Fishman Presys II (with Tuner)
Nut & Saddle	Bone	Finish	Ultra-thin UV-finish

Also available: 00M-15+, 000M-15L+ (lefthand), 000MC-15EL+

Photo: DMC-15E+, DM-15+

# 15 Series



## SDM-15E+ / S000M-15E+

Body Size	SDM-15E+: D-14 Fret S000M-15E+: 000-14 Fret
Construction	Dovetail Neck Joint
Top	Solid Mahogany
Back & Sides	Solid Mahogany
Neck	Mahogany, Low Profile
Nut & Saddle	Bone
Fingerboard	Micarta
Scale Length	25.4" (645 mm)
Neck width at nut	1-11/16" (42,9 mm)
Tuning Machines	Nickel open-geared, w/ Ivoroid knobs
Electronics:	Fishman Presys+ (with Tuner)
Finish	Ultra-thin UV-finish
Bag	SDM-15E+: SB-D bag included S000M-15E+: SB-C bag included



# Standard Series



## 000T-28S+

Body Size	000-12 Fret
Construction	Dovetail Neck Joint
Top	Solid Sitka Spruce
Back & Sides	Tilia
Neck	Mahogany, Low Profile
Nut & Saddle	Bone
Fingerboard	Micarta
Scale Length	25.4" (645 mm)
Neck width at nut	1-3/4" (44,5 mm)
Tuning Machines	Grover Nickel Open-Geared w/ Butterbean knobs
Finish	Ultra-thin UV-finish w/ Aging toner



# Standard Series

## DM-18+

Body Size	D-14 Fret
Construction	Dovetail Neck Joint
Top	Solid Sitka Spruce
Back & Sides	Mahogany
Neck	Mahogany, Low Profile
Nut & Saddle	Bone
Fingerboard	Micarta
Scale Length	25.4" (645 mm)
Neck width at nut	1-3/4" (44,5 mm)
Tuning Machines	Grover Nickel Open-Gear w/ Butterbean knobs
Finish	Aging Toner



Also available: 000M-18+



## DTC-28HE+ / DT-28H+

Body Size	DTC-28HE+: D-14 Fret, Cutaway DT-28H+: D-14 Fret	Scale Length	25.4" (645 mm)
Construction	Dovetail Neck Joint	Neck width at nut	1-3/4" (44,5 mm)
Top	Solid Sitka Spruce	Tuning Machines	Grover Nickel Open-Gear w/ Butterbean knobs
Back & Sides	Tilia	Electronics	DTC-28HE+: Fishman Presys+ (with Tuner)
Neck	Mahogany, Low Profile	Finish	Ultra-thin UV-finish
Nut & Saddle	Bone		
Fingerboard	Micarta		

Also available: OMT-28H+



# Standard Series



## DT-41+ DTC-41E+

Body Size	DT-41+: D-14 Fret DTC-41E+: D-14 Fret, Cutaway
Construction	Dovetail Neck Joint
Top	Solid Sitka Spruce
Back & Sides	Tilia
Neck	Mahogany, Low Profile
Nut & Saddle	Bone
Fingerboard	Micarta
Scale Length	25.4" (645 mm)
Neck width at nut	1-3/4" (44,5 mm)
Tuning Machines	Grover Gold Open-Gear w/ Butterbean knobs
Electronics	DTC-41E+: Fishman Presys+ (with Tuner)
Finish	Ultra-thin UV-finish



## JTC-40E+

Body Size	J-14 Fret, Cutaway
Construction	Dovetail Neck Joint
Top	Solid Sitka Spruce
Back & Sides	Tilia
Neck	Mahogany, Low Profile
Nut & Saddle	Bone
Fingerboard	Micarta
Scale Length	25.4" (645 mm)
Neck width at nut	1-3/4" (44,5 mm)
Tuning Machines	Grover Gold Open-Gear w/ Butterbean knobs
Electronics	Fishman Presys+ (with Tuner)
Finish	Ultra-thin UV-finish



# Standard Series

## GUITAR HISTORY

since 1970



### DT-45+

Body Size	D-14 Fret
Construction	Dovetail Neck Joint
Top	Solid Sitka Spruce
Back & Sides	Tilia
Neck	Mahogany, Low Profile
Nut & Saddle	Bone
Fingerboard	Micarta
Scale Length	25.4" (645 mm)
Neck width at nut	1-3/4" (44,5 mm)
Tuning Machines	Grover Gold Open-Gear w/ Butterbean knobs
Finish	Ultra-thin UV-finish



# Standard Series

## SDM-18E+ / S000M-18E+

Body Size	SDM-18E+: D-14 Fret S000M-18E+: 000-14 Fret
Construction	Dovetail Neck Joint
Top	Solid Sitka Spruce
Back & Sides	Solid Mahogany
Neck	Mahogany, Low Profile
Nut & Saddle	Bone
Fingerboard	Ebony
Scale Length	25.4" (645 mm)
Neck width at nut	1-11/16" (42,9 mm)
Tuning Machines	Chrome, Grover open-Geared
Electronics	Sigma Soundhole Preamp
Finish	Ultra-thin UV-finish
Bag	SDM-18E+: SB-D bag included S000M-18E+: SB-C bag included



# SG Series

## DM-SG5+

Body Size	D-14 Fret
Construction	Dovetail Neck Joint
Top	Solid Sitka Spruce
Back & Sides	Mahogany
Neck	Mahogany, Low Profile
Nut & Saddle	Bone
Fingerboard	Micarta
Scale Length	24.75" (628 mm)
Neck width at nut	1-3/4" (44,5 mm)
Tuning Machines	Chrome, Grover diecast
Electronics	Fishman Sonitone
Finish	Ultra-thin UV-finish



# SG Series



## DA-SG7+

Body Size	D-14 Fret
Construction	Dovetail Neck Joint
Top	Solid Sitka Spruce
Back & Sides	Flamed Maple
Neck	Maple w/ Walnut strip, Low Profile
Nut & Saddle	Bone
Fingerboard	Micarta
Scale Length	24.75" (628 mm)
Neck width at nut	1-3/4" (44,5 mm)
Tuning Machines	Chrome, Grover diecast
Electronics	Fishman Sonitone
Finish	Ultra-thin UV-finish



## GJA-SG200+

Body Size	Grand Jumbo-14 Fret
Construction	Dovetail Neck Joint
Top	Solid Sitka Spruce
Back & Sides	Flamed Maple
Neck	Maple, Low Profile
Nut & Saddle	Bone
Fingerboard	Micarta
Scale Length	25.4" (645 mm)
Neck width at nut	1-3/4" (44,5 mm)
Tuning Machines	Gold, Grover diecast
Electronics	Fishman Sonitone
Finish	Ultra-thin UV-finish



# SG Series



## GJA-SG200-AN+

Body Size	Grand Jumbo-14 Fret	Fingerboard	Micarta
Construction	Dovetail Neck Joint	Scale Length	25.4" (645 mm)
Top	Solid Sitka Spruce	Neck width at nut	1-3/4" (44,5 mm)
Back & Sides	Flamed Maple	Tuning Machines	Gold, Grover diecast
Neck	Maple, Low Profile	Electronics	Fishman Sonitone
Nut & Saddle	Bone	Finish	Ultra-thin UV-finish



## GJM-SGE+ / JM-SGE+ / LM-SGE+

Body Size	GJM-SGE+: Grand Jumbo 14-Fret JM-SGE+: D-14 Fret, Slope Shoulder LM-SGE+: 00-14 Fret	Fingerboard	Micarta
Construction	Dovetail Neck Joint	Scale Length	GJM-SGE+: 25.4" (645 mm) JM-SGE+, LM-SGE+: GJM-SGE+: 24.75" (628mm)
Top	Solid Sitka Spruce	Neck width at nut	1-11/16" (42,9 mm)
Back & Sides	Mahogany	Tuning Machines	Chrome, diecast
Neck	Mahogany, Low Profile	Electronics	Sigma Preamp (with Tuner)
Nut & Saddle	Bone	Finish	Ultra-thin UV-finish

Also available: JM-SG45L+ (lefthand), GJM-SG100+

## JM-SG45+ / LM-SG00+

Body Size	JM-SG45+: D-14 Fret, Slope Shoulder LM-SG00+: 00-14 Fret
Construction	Dovetail Neck Joint
Top	Solid Sitka Spruce
Back & Sides	Mahogany
Neck	Mahogany, Low Profile
Nut & Saddle	Bone
Fingerboard	Micarta
Scale Length	24.75" (628mm)
Neck width at nut	1-3/4" (44,5 mm)
Tuning Machines	Grover Nickel Open-Geared w/ Ivoroid knobs
Electronics:	Fishman Sonitone
Finish	Ultra-thin UV-finish





# SG Series



## JM-SG160E+

Body Size	D-15 Fret, Slope Shoulder
Construction	Dovetail Neck Joint
Top	Solid Sitka Spruce
Back & Sides	Mahogany
Neck	Mahogany, Low Profile
Nut & Saddle	Bone
Fingerboard	Micarta
Scale Length	24.75" (628 mm)
Neck width at nut	1-3/4" (44,5 mm)
Tuning Machines	Grover Nickel vintage w/ tulip tuners
Electronics	P-90 Tesla Single Coil w/ V+T control
Finish	Ultra-thin UV-finish

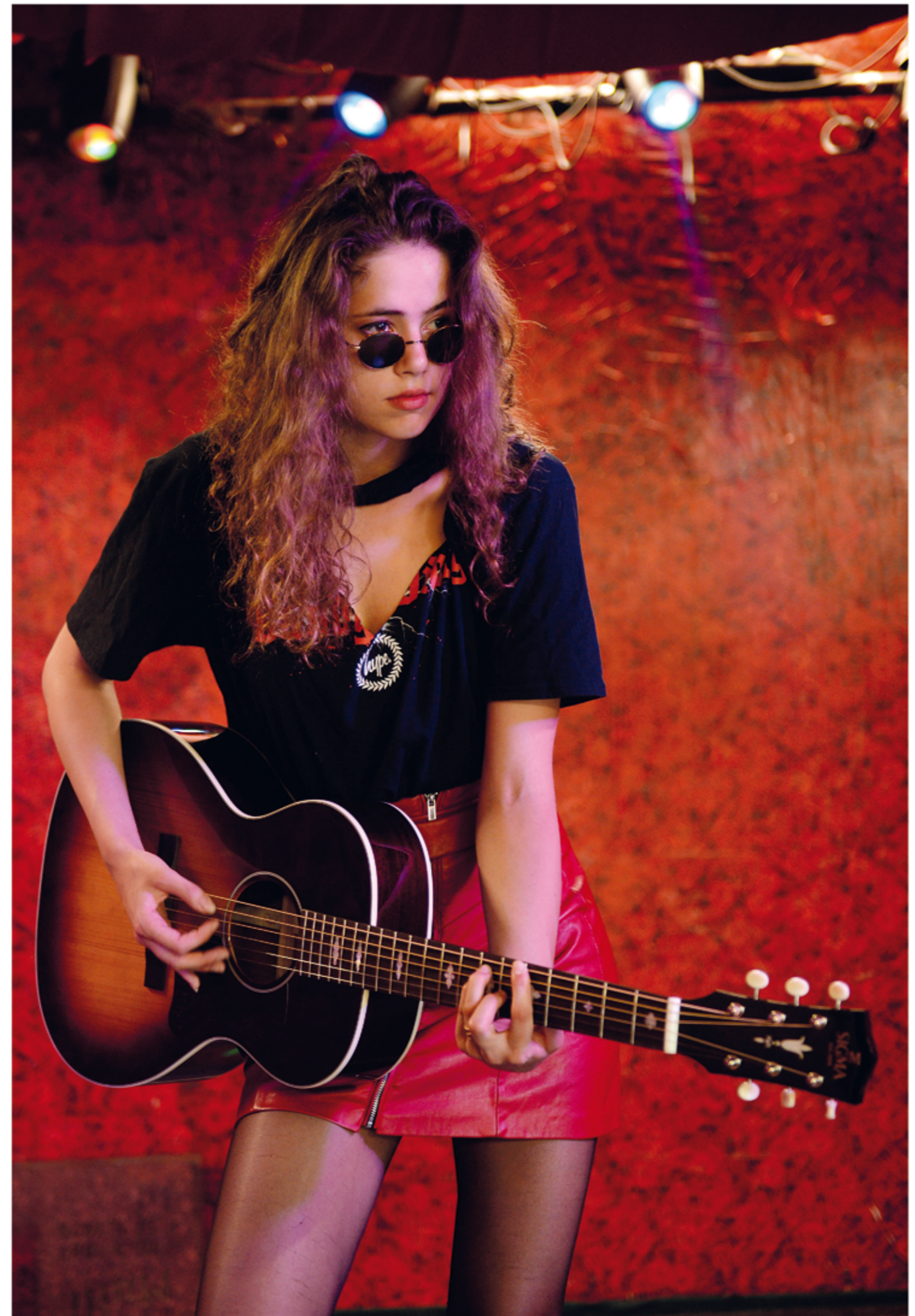


# SG Series



## SJM-SG45+ / SLM-SG00+

Body Size	SJM-SG45+: D-14 Fret, Slope Shoulder SLM-SG00+: 00-14 Fret, Slope Shoulder	Fingerboard	Ebony
Construction	Dovetail Neck Joint	Scale Length	24.75" (628 mm)
Top	Solid Adirondack Spruce	Neck width at nut	1-3/4" (44,5 mm)
Back & Sides	Solid Mahogany	Tuning Machines	Grover Nickel Open-Geared w/ Ivoroid knobs
Neck	Mahogany	Electronics	Fishman Sonitone
Nut & Saddle	Bone	Finish	Ultra-thin UV-finish
		Bag	SJM-SG45+: SB-D bag included SLM-SG00+: SB-C bag included



# Modern Series



## GMCE-1+

Body Size	Grand OM-14 Fret, Cutaway
Construction	Dovetail Neck Joint
Top	Solid Sitka Spruce
Back & Sides	Mahogany
Neck	Mahogany, Low Profile
Nut & Saddle	Bone
Fingerboard	Micarta
Scale Length	25.4" (645 mm)
Neck width at nut	1-3/4" (44,5 mm)
Tuning Machines	Chrome, diecast
Electronics	Fishman Flex
Finish	Ultra-thin UV-finish



## GTCE-2-SB+

Body Size	Grand OM-14 Fret, Cutaway
Construction	Dovetail Neck Joint
Top	Solid Sitka Spruce
Back & Sides	Tilia
Neck	Mahogany, Low Profile
Nut & Saddle	Bone
Fingerboard	Micarta
Scale Length	25.4" (645 mm)
Neck width at nut	1-3/4" (44,5 mm)
Tuning Machines	Chrome, diecast
Electronics	Fishman Flex
Finish	Ultra-thin UV-finish

Also available: GTCE-2+

# Modern Series



## GACE-3-SB+

Body Size	Grand OM-14 Fret, Cutaway
Construction	Dovetail Neck Joint
Top	Solid European Alpine Spruce
Back & Sides	Flamed Maple
Neck	Mahogany, Low Profile
Nut & Saddle	Bone
Fingerboard	Micarta
Scale Length	25.4" (645 mm)
Neck width at nut	1-3/4" (44,5 mm)
Tuning Machines	Nickel w/ Ebony buttons
Electronics	Fishman Flex Plus
Finish	Ultra-thin UV-finish

# Modern Series



## GECE-3+

Body Size	Grand OM-14 Fret, Cutaway	Fingerboard	Micarta
Construction	Dovetail Neck Joint	Scale Length	25.4" (645 mm)
Top	Solid European Alpine Spruce	Neck width at nut	1-3/4" (44,5 mm)
Back & Sides	Macassar Ebony	Tuning Machines	Nickel w/ Ebony buttons
Neck	Mahogany, Low Profile	Electronics	Fishman Flex Plus
Nut & Saddle	Bone	Finish	Ultra-thin UV-finish

# Modern Series



## GZCE-3+

Body Size	Grand OM-14 Fret, Cutaway	Fingerboard	Micarta
Construction	Dovetail Neck Joint	Scale Length	25.4" (645 mm)
Top	Solid European Alpine Spruce	Neck width at nut	1-3/4" (44,5 mm)
Back & Sides	Ziricote	Tuning Machines	Nickel w/ Ebony buttons
Neck	Mahogany, Low Profile	Electronics	Fishman Flex Plus
Nut & Saddle	Bone	Finish	Ultra-thin UV-finish

# Limited Edition



## SGJA-SG200+ LIMITED

Body Size	Grand Jumbo-14 Fret
Construction	Dovetail Neck Joint
Top	Solid Adirondack Spruce
Back & Sides	Solid Flamed Maple
Neck	Maple, w/ walnut strip, Low Profile
Nut & Saddle	Bone
Fingerboard	Solid Black Ebony
Scale Length	25.4" (645 mm)
Neck width at nut	1-3/4" (44,5 mm)
Tuning Machines	Tulip tuners w/ ivory knob, gold
Electronics:	Fishman Sonitone
Finish:	Vintage Sunburst UV-finish
Case:	SC-GJ Deluxe Plywood Case (black)

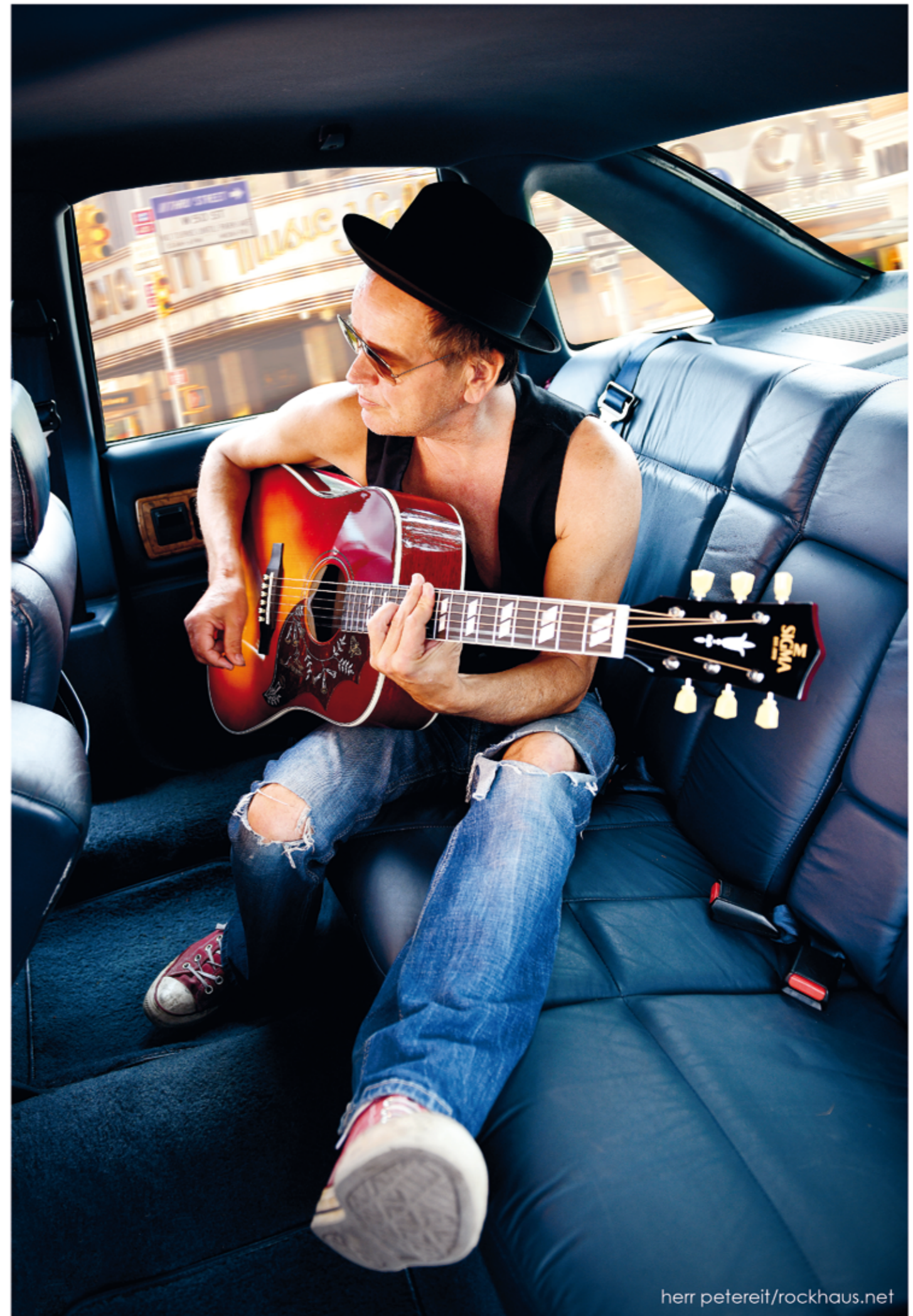


# Limited Edition



## SDM-SG5+ LIMITED

Body Size	D-14 Fret
Construction	Dovetail Neck Joint
Top	Solid Adirondack Spruce
Back & Sides	Solid Mahogany
Neck	Mahogany, Low Profile
Nut & Saddle	Bone
Fingerboard	Solid Black Ebony
Scale Length	24.75" (628 mm)
Neck width at nut	1-3/4" (44,5 mm)
Tuning Machines	Tulip tuners w/ ivory knob, nickel
Electronics:	Fishman Sonitone
Finish:	Vintage Cherry Sunburst UV-finish
Case:	SC-D Deluxe Plywood Case (black)





# Limited Edition



## SGBCE-5+ LIMITED

Body Size	Grand OM-14 Fret, Cutaway
Construction	Dovetail Neck Joint
Top	European Alpine Spruce
Back & Sides	Solid Blackwood
Neck	Mahogany, Low Profile
Nut & Saddle	Bone
Fingerboard	Solid Black Ebony
Scale Length	25.4" (645 mm)
Neck width at nut	1-3/4" (44,5 mm)
Tuning Machines	Gold w/ ebony button
Electronics	Fishman Flex Plus
Finish	Ultra-thin UV-finish
Case	SC-G Deluxe Plywood Case included



# Signature Edition



## GM+ PB

Signature:	Peter Bursch
Body Size	Grand OM-14 Fret
Construction	Dovetail Neck Joint
Top	Solid Sitka Spruce
Back & Sides	Mahogany
Neck	Mahogany, Low Profile
Nut & Saddle	Bone
Fingerboard	Micarta
Scale Length	25.4" (645 mm)
Neck width at nut	1-3/4" (44,5 mm)
Tuning Machines	Chrome, diecast
Finish	Ultra-thin UV-finish w/ aging toner
Bag:	SBX-C bag included



*Peter Bursch*



Steffi Stephan/Panik-Orchester  
steffistephan.de



# Acoustic Basses



## BME+

Body Size	J-14 Fret
Construction	Dovetail Neck Joint
Top	Solid Sitka Spruce
Back & Sides	Mahogany
Neck	Mahogany, Bass
Nut & Saddle	Bone
Fingerboard	Micarta
Scale Length	34" (864 mm)
Neck width at nut	1.58" (40,1 mm)
Tuning Machines	Chrome, diecast
Electronics	Sigma Preamp (with Tuner)
Finish	Ultra-thin UV-finish



Also available: BMC-1STE+

# Acoustic Basses



## BMC-155E+

Body Size	Body Size: J-14 Fret (5 String), Cutaway
Top	Solid Mahogany
Back & Sides	Mahogany
Neck	Mahogany, Bass
Nut & Saddle	Bone
Fingerboard	Micarta
Scale Length	34" (864 mm)
Neck width at nut	1.77" (45 mm)
Tuning Machines	Chrome, Grover diecast
Electronics	Fishman Presys II (with Tuner)
Finish	Ultra-thin UV-finish



## BMC-15FE+ / BMC-15E+

Body Size	BMC-15FE+: J-14 Fret (Fretless), Cutaway BMC-15E+: J-14 Fret, Cutaway	Nut & Saddle	Bone
Construction	Dovetail Neck Joint	Fingerboard	Micarta
Top	Solid Mahogany	Scale Length	34" (864 mm)
Back & Sides	Mahogany	Neck width at nut	1.58" (40,1 mm)
Neck	Mahogany, Bass	Tuning Machines	Chrome, Grover diecast
		Electronics	Fishman Presys II (with Tuner)
		Finish	Ultra-thin UV-finish



Alvaro Soler

with his CMC-6E+

# Classical Guitars



## CMC-6E+

Body Size	Classic, Cutaway
Top	Solid Cedar
Back & Sides	Mahogany
Neck	Mahogany, Standard
Nut & Saddle	Bone
Fingerboard	Micarta
Scale Length	650 mm
Neck width at nut	52 mm
Tuning Machines	Deluxe, Gold
Electronics	Fishman Presys+ (with Tuner)
Finish	Ultra-thin UV-finish



Also available: CM-ST+, CMC-STE+

# Resonators

## RM-140E+ / RM-140+

Body Size	Cone resonator 14-Fret
Construction	Traditional Stick-Through
Top	Mahogany
Back & Sides	Mahogany
Neck	Mahogany, Round Profile
Nut	Bone
Fingerboard	Micarta
Scale Length	24.75" (628 mm)
Neck width at nut	1-3/4" (44,5 mm)
Tuning Machines	Grover Nickel Open-Geared, w/ Butterbean knobs
Electronics	RM-140E+: Tesla PU, w/ V+T controls
Finish	Ultra-thin UV-finish







## SUM-2T+

Body Size	Tenor Uke
Construction	Dovetail Neck Joint
Top	Solid Mahogany
Back & Sides	Solid Mahogany
Neck	Mahogany
Nut & Saddle	Bone
Fingerboard	Micarta
Scale Length	17" (432 mm)
Neck width at nut	1-13/32" (36 mm)
Tuning Machines	Nickel, w/ Black buttons
Finish	Ultra-thin UV-finish
Bag	Bag for Ukes included





## SUM-2S+ / SUM-2C+

Body Size	SUM-2S+: Soprano Uke SUM-2C+: Concert Uke
Construction	Dovetail Neck Joint
Top	Solid Mahogany
Back & Sides	Solid Mahogany
Neck	Mahogany
Nut & Saddle	Bone
Fingerboard	Micarta
Scale Length	SUM-2S+: 13.614" (346 mm) SUM-2C+: 15" (381 mm)

Neck width at nut	1-13/32" (36 mm)
Tuning Machines	SUM-2S+: Nickel, w/ White buttons SUM-2C+: Nickel, w/ Black buttons
Finish	Ultra-thin UV-finish
Bag	Bag for Ukes included



photo: bernhard eder

# Bags & Cases

## Gigbag

### SB-D / SBX-D

for Dreadnought 6 & 12-String and Jumbo Guitars

### SB-C / SBX-C

for 000-Guitars, Grand Orchestra Models and Classical Guitars

## Deluxe Case

### SC-D

for Dreadnought 6 & 12-String Guitars

### SC-OM

for 000-Guitars and Orchestra Models

### SC-C

for Classical Guitars

### SC-G

for Grand Orchestra Models

### SC-GJ

for Grand Jumbo Models (SG-Series)

### SC-J

for Jumbo 6 & 12 String Guitars

### SC-0012

for 00-12th Fret Models

### SC-00012

for 000-12th Fret Models

### SB-B

for Acoustic Bases

### SB-GJ

for Grand Jumbo Models (SG Series)



### TRAVEL GUITARS

<b>TM-12+</b>	Bag included
<b>TM-12E+</b>	Bag included
<b>TM-15+</b>	Bag included
<b>TM-15E+</b>	Bag included

### SE Series

<b>DME+</b>	Available case: SC-D
<b>DMEL+</b>	Available case: SC-D
<b>DM12E+</b>	Available case: SC-D
<b>00MSE+</b>	Available case: SC-0012
<b>000ME+</b>	Available case: SC-OM
<b>GME+</b>	Available case: SC-G
<b>000TCE+</b>	Available case: SC-OM
<b>DMCE-BKB+</b>	Available case: SC-D
<b>DTCE+</b>	Available case: SC-D
<b>GTCE+</b>	Available case: SC-G

### ST Series

<b>DM-ST+</b>	Available case: SC-D
<b>DMC-STE+</b>	Available case: SC-D
<b>OMM-ST+</b>	Available case: SC-OM
<b>OMM-STL+</b>	Available case: SC-OM
<b>GMC-STE+</b>	Available case: SC-G
<b>GMC-STE-BKB+</b>	Available case: SC-G
<b>SDM-STE+</b>	SBX-D bag included, available case: SC-D

### 1 Series

<b>DM-1ST+</b>	Available case: SC-D
<b>DM-1STL+</b>	Available case: SC-D
<b>DM12-1ST+</b>	Available case: SC-D
<b>DMC-1STE+</b>	Available case: SC-D
<b>DMC-1STEL+</b>	Available case: SC-D
<b>DMC-1STE-BK+</b>	Available case: SC-D
<b>DT-1STE+</b>	Available case: SC-D
<b>DTC-1STE-SB+</b>	Available case: SC-D
<b>JMC-1STE+</b>	Available case: SC-J
<b>JM12-1STE+</b>	Available case: SC-J
<b>000M-1ST+</b>	Available case: SC-OM
<b>000MC-1STE+</b>	Available case: SC-OM
<b>000MC-1STE-BK+</b>	Available case: SC-OM
<b>OMT-1STE+</b>	Available case: SC-OM
<b>OMTC-1STE-SB+</b>	Available case: SC-OM
<b>GMC-1STE+</b>	Available case: SC-G
<b>00M-1STS-SB+</b>	Available case: SC-0012

### 15 Series

<b>DM-15+</b>	Available case: SC-D
<b>DMC-15E+</b>	Available case: SC-D
<b>SDM-15E+</b>	Bag included, available case: SC-D
<b>S000M-15E+</b>	Bag included, available case: SC-OM
<b>00M-15+</b>	Available case: SC-OM
<b>000M-15+</b>	Available case: SC-OM
<b>000M-15L+</b>	Available case: SC-OM
<b>000MC-15E+</b>	Available case: SC-OM
<b>000MC-15EL+</b>	Available case: SC-OM
<b>00M-15S+</b>	Available case: SC-0012

### Standard Series

<b>DM-18+</b>	Available case: SC-D
<b>DT-28H+</b>	Available case: SC-D
<b>DTC-28HE+</b>	Available case: SC-D
<b>JTC-40E+</b>	Available case: SC-J
<b>DT-41+</b>	Available case: SC-D
<b>DTC-41E+</b>	Available case: SC-D
<b>DT-45+</b>	Available case: SC-D
<b>OMT-28H+</b>	Available case: SC-OM
<b>000M-18+</b>	Available case: SC-OM
<b>000T-28S+</b>	Available case: SC-00012
<b>SDM-18E+</b>	Bag included, available case: SC-D
<b>S000M-18E+</b>	Bag included, available case: SC-OM

### SG Series

<b>DM-SG5+</b>	Available case: SC-D
<b>DA-SG7+</b>	Available case: SC-D
<b>GJA-SG200+</b>	Available case: SC-GJ
<b>GJA-SG200-AN+</b>	Available case: SC-GJ
<b>GJM-SG100+</b>	Available case: SC-GJ
<b>GJM-SGE+</b>	Available case: SC-GJ
<b>JM-SG45+</b>	Available case: SC-D
<b>JM-SG45L+</b>	Available case: SC-D
<b>JM-SGE+</b>	Available case: SC-D
<b>JM-SG160E+</b>	Available case: SC-D
<b>LM-SG00+</b>	Available case: SC-OM
<b>LM-SGE+</b>	Available case: SC-OM
<b>SJM-SG45+</b>	Bag included, available case: SC-D
<b>SLM-SG00+</b>	Bag included, available case: SC-OM

### Modern Series

<b>GMCE-1+</b>	Available case: SC-G
<b>GTCE-2+</b>	Available case: SC-G
<b>GTCE-2-SB+</b>	Available case: SC-G
<b>GACE-3-SB+</b>	Available case: SC-G
<b>GECE-3+</b>	Available case: SC-G
<b>GZCE-3+</b>	Available case: SC-G

### Limited Edition

<b>SGBCE-5+</b>	SC-G case included
<b>SDM-SG5+</b>	SC-D case included
<b>SDM-SG5L+</b>	SC-D case included
<b>SGJA-SG200+</b>	SC-GJ case included

### Signature Edition

<b>GM+ PB</b>	SBX-C bag included
---------------	--------------------

### Acoustic Bases

<b>BME+</b>	Available bag: SB-B
<b>BMC-1STE+</b>	Available bag: SB-B
<b>BMC-15E+</b>	Available bag: SB-B
<b>BMC-155E+</b>	Available bag: SB-B
<b>BMC-15FE+</b>	Available bag: SB-B

### Classical Guitars

<b>CM-ST+</b>	Available case: SC-C
<b>CMC-STE+</b>	Available case: SC-C
<b>CMC-6E+</b>	Available case: SC-C

### Resonator Guitars

<b>RM-140+</b>	
<b>RM-140E+</b>	

### Ukes

<b>SUM-2S+</b>	Bag included
<b>SUM-2C+</b>	Bag included
<b>SUM-2T+</b>	Bag included

### Bags

<b>SB-D</b>	Dreadnought 6 & 12-String, Jumbo Guitars
<b>SBX-D</b>	Dreadnought 6 & 12-String, Jumbo Guitars
<b>SB-C</b>	000-Guitars, Grand Orchestra Models and Classicals
<b>SBX-C</b>	000-Guitars, Grand Orchestra Models and Classicals
<b>SB-B</b>	Acoustic Bases
<b>SB-GJ</b>	Grand Jumbo Models (SG Series)

### Cases

<b>SC-D</b>	Dreadnought 6 & 12-String Guitars
<b>SC-OM</b>	000-Guitars and Orchestra Models
<b>SC-C</b>	Classical Guitars
<b>SC-G</b>	Grand Orchestra Models
<b>SC-GJ</b>	Grand Jumbo Models (SG-Series)
<b>SC-J</b>	Jumbo 6 & 12 String Guitars
<b>SC-0012</b>	00-12th Fret Models
<b>SC-00012</b>	000-12th Fret Models



AMI Musical Instruments GmbH  
Am Neufeld 8  
81829 München  
Germany

Phone: +49 (0)89 - 93 99 66 9-0  
Fax: +49 (0)89 - 93 67 52

[www.sigma-guitars.com](http://www.sigma-guitars.com)  
[info@ami-gmbh.de](mailto:info@ami-gmbh.de)

[www.facebook.com/SigmaGuitars](https://www.facebook.com/SigmaGuitars)  
[www.instagram.com/SigmaGuitars](https://www.instagram.com/SigmaGuitars)

Dealer: